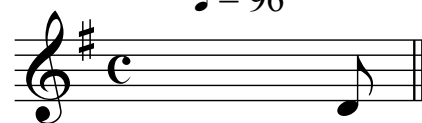


Narretje

tekst en muziek: René Schols

arrangement: René Schols

♩ = 96



Narretje luistert

A

Narretje zingt

B

In de zaal van het kas - teel zit de jonk-vrouw op haar troon
Nar - re - tje jij wordt be - loond als jij nu jouw kuns - ten toont.
nar - re - tje nar - re - tje als jij nu jouw kuns - ten toont
ha ha ha ha ha ha, word jij met een lach be - loond.

Narretje speelt

C

klap klap klap stamp stamp stamp bel bel bel bel bel bel bel
klap klap klap stamp stamp stamp bel bel bel bel bel bel bel

Narretje doet een kunst

Chords: Bm, F#7, G, D

Chords: Bm, F#7, C, D

Chords: C, C, D

Musical notation for the first section, consisting of three staves. The first staff starts with a treble clef, a key signature of one sharp (F#), and a time signature of 4/4. It contains a melodic line with notes G4, A4, B4, C5, D5, E5, F#5, G5, F#5, E5, D5, C5, B4, A4, G4. Above the staff are chords Bm, F#7, G, and D. The second staff continues the melody with notes G4, A4, B4, C5, D5, E5, F#5, G5, F#5, E5, D5, C5, B4, A4, G4. Above the staff are chords Bm, F#7, C, and D. The third staff continues the melody with notes G4, A4, B4, C5, D5, E5, F#5, G5, F#5, E5, D5, C5, B4, A4, G4. Above the staff are chords C, C, and D. There are first and second endings indicated by brackets and numbers 1 and 2.

Narretje luistert

Narretje zingt

Narretje speelt

♩ = 106

Chords: A, B, C

Musical notation for the second section, consisting of one staff. It starts with a treble clef, a key signature of one sharp (F#), and a time signature of 4/4. It contains three measures of whole notes: A, B, and C. Above each measure is a box containing the letter of the chord. To the right of the staff is a tempo marking: ♩ = 106.

Narretje buigt

Bm

F#7

G

D

Chords: Bm, F#7, C, D

Musical notation for the third section, consisting of four staves. The first staff starts with a treble clef, a key signature of two sharps (F# and C#), and a time signature of 3/4. It contains a melodic line with notes G4, A4, B4, C5, D5, E5, F#5, G5, F#5, E5, D5, C5, B4, A4, G4. Above the staff are chords Bm, F#7, G, and D. The second staff continues the melody with notes G4, A4, B4, C5, D5, E5, F#5, G5, F#5, E5, D5, C5, B4, A4, G4. Above the staff are chords Bm, F#7, C, and D. The third staff continues the melody with notes G4, A4, B4, C5, D5, E5, F#5, G5, F#5, E5, D5, C5, B4, A4, G4. Above the staff are chords C, followed by three slashes (/). The fourth staff continues the melody with notes G4, A4, B4, C5, D5, E5, F#5, G5, F#5, E5, D5, C5, B4, A4, G4. Above the staff are four slashes (/). There are first and second endings indicated by brackets and numbers 1 and 2.

Narretje luistert

Narretje zingt

Narretje speelt

♩ = 80

Chords: A, B, C

Musical notation for the fourth section, consisting of one staff. It starts with a treble clef, a key signature of two sharps (F# and C#), and a time signature of common time (C). It contains three measures of whole notes: A, B, and C. Above each measure is a box containing the letter of the chord. To the right of the staff is a tempo marking: ♩ = 80.

Narretje sluipt

Bm F#7 G D

D''

Bm F#7 C D

Bm F#7 G D

Bm F#7 G 1. D

2. D Bb C D

straight ♩ = 96

Narretje luistert

Narretje zingt

Narretje speelt

♩ = 106

Narretje slaapt

Bm F#7 G D

D'''

Bm F#7 1. C D

2. C % % %

% % %